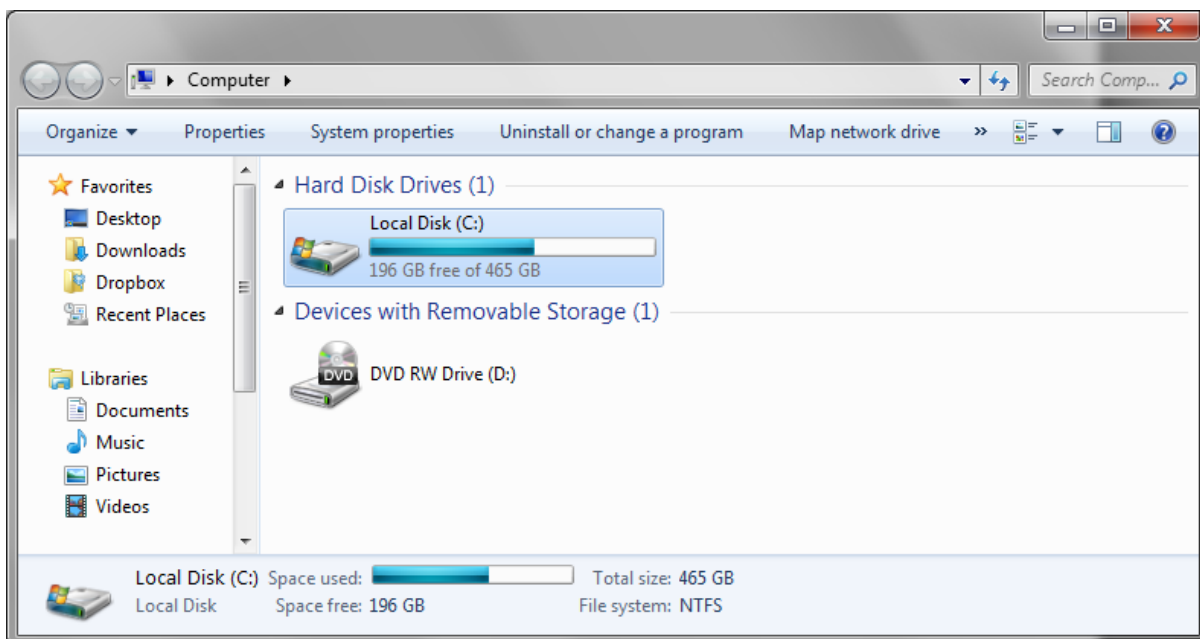
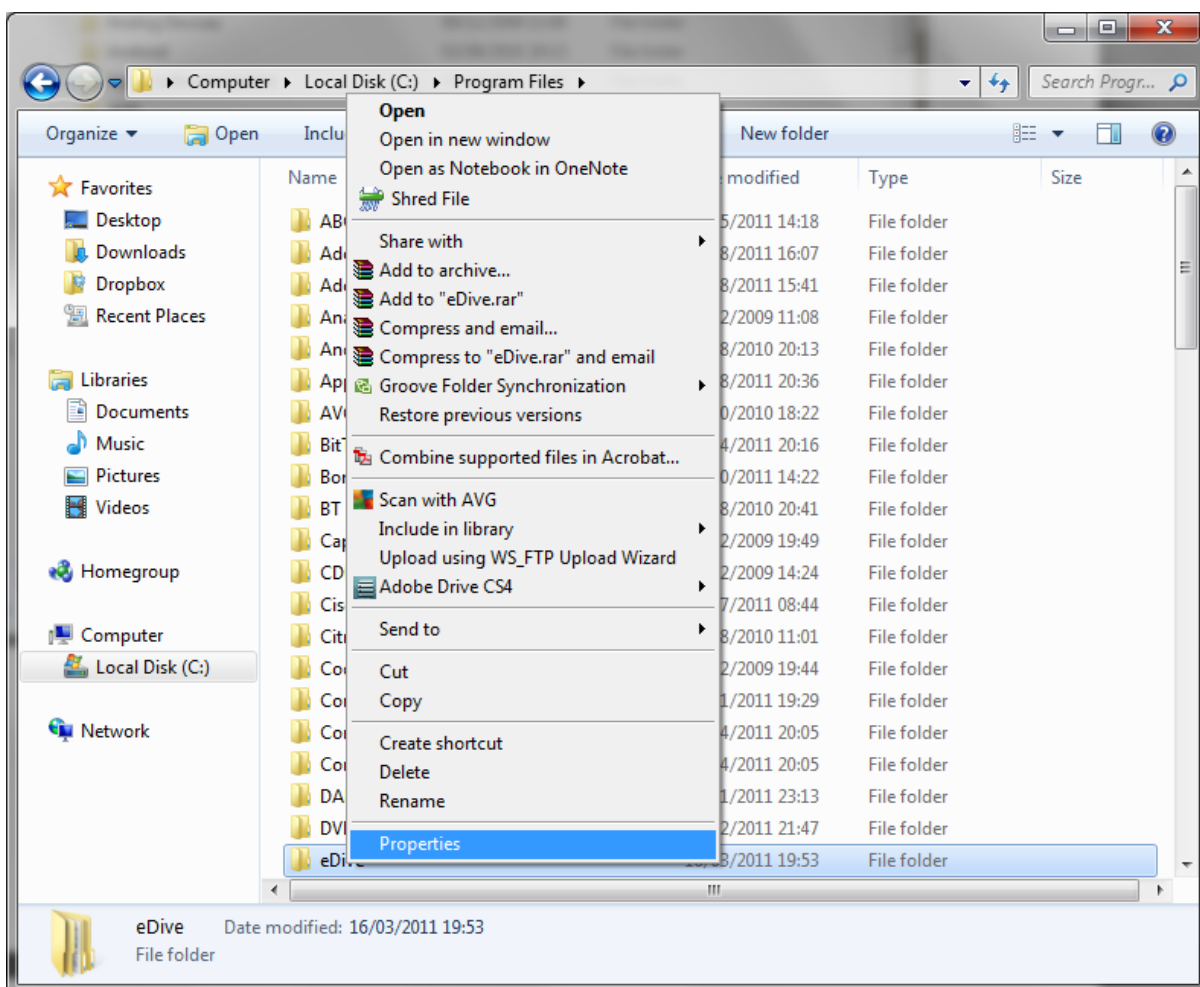


Click on the 'Computer' Icon on your desktop to bring up a screen similar to the one below.

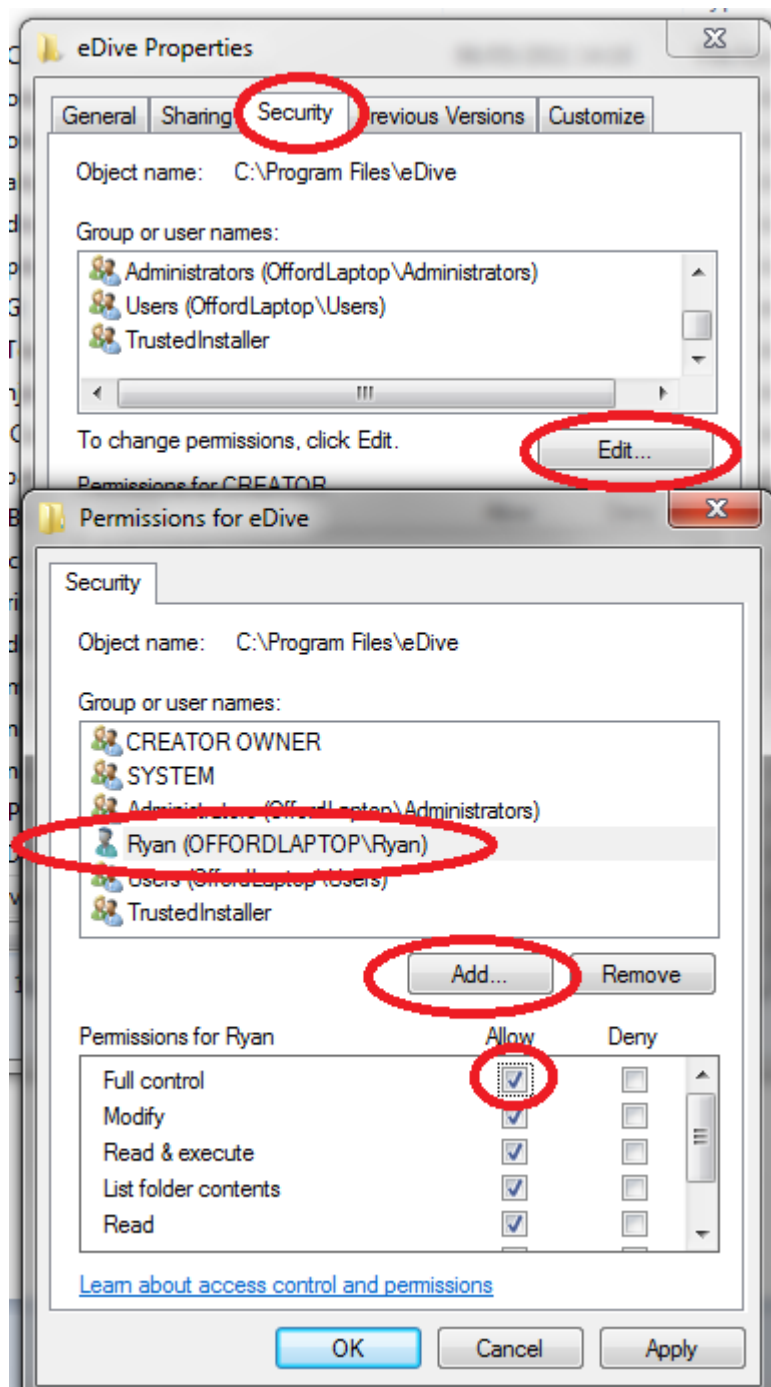


Double click on C drive, then find the folder called 'Program Files' or 'Program Files (x86)'. Double click on it. Scroll down and find the 'eDive' folder.



Right hand click on the folder and choose 'Properties'.

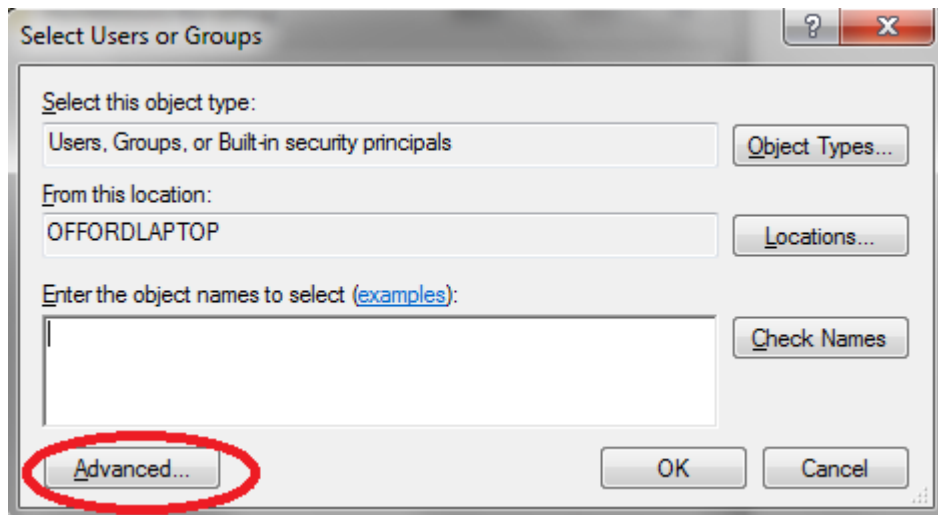
When the properties box pops up, choose the 'Security' tab and click on 'Edit' as shown below.



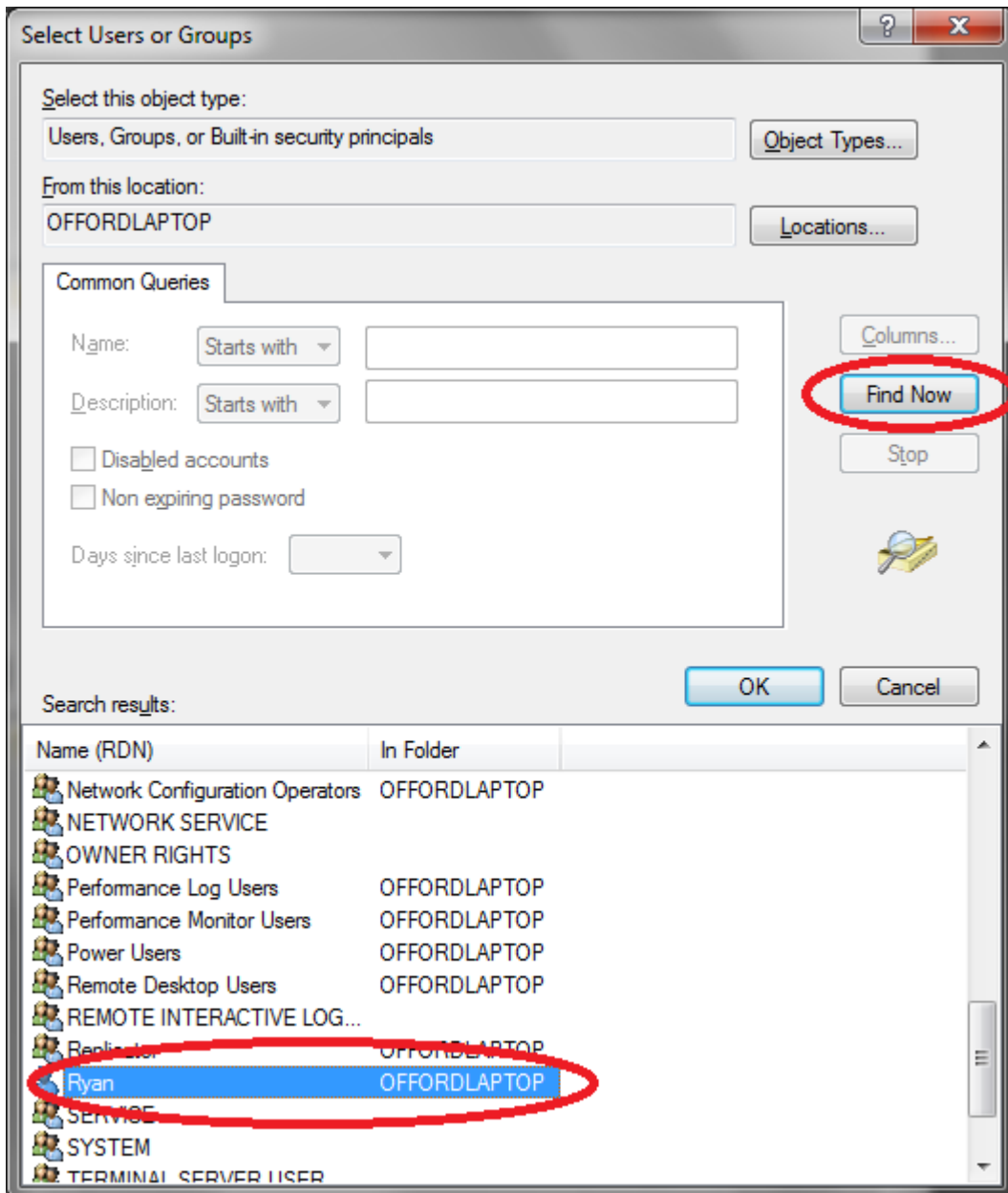
If you can see your current user (who you logged onto windows as) then skip this next stage.

If you can't see your current user, click on 'Add'

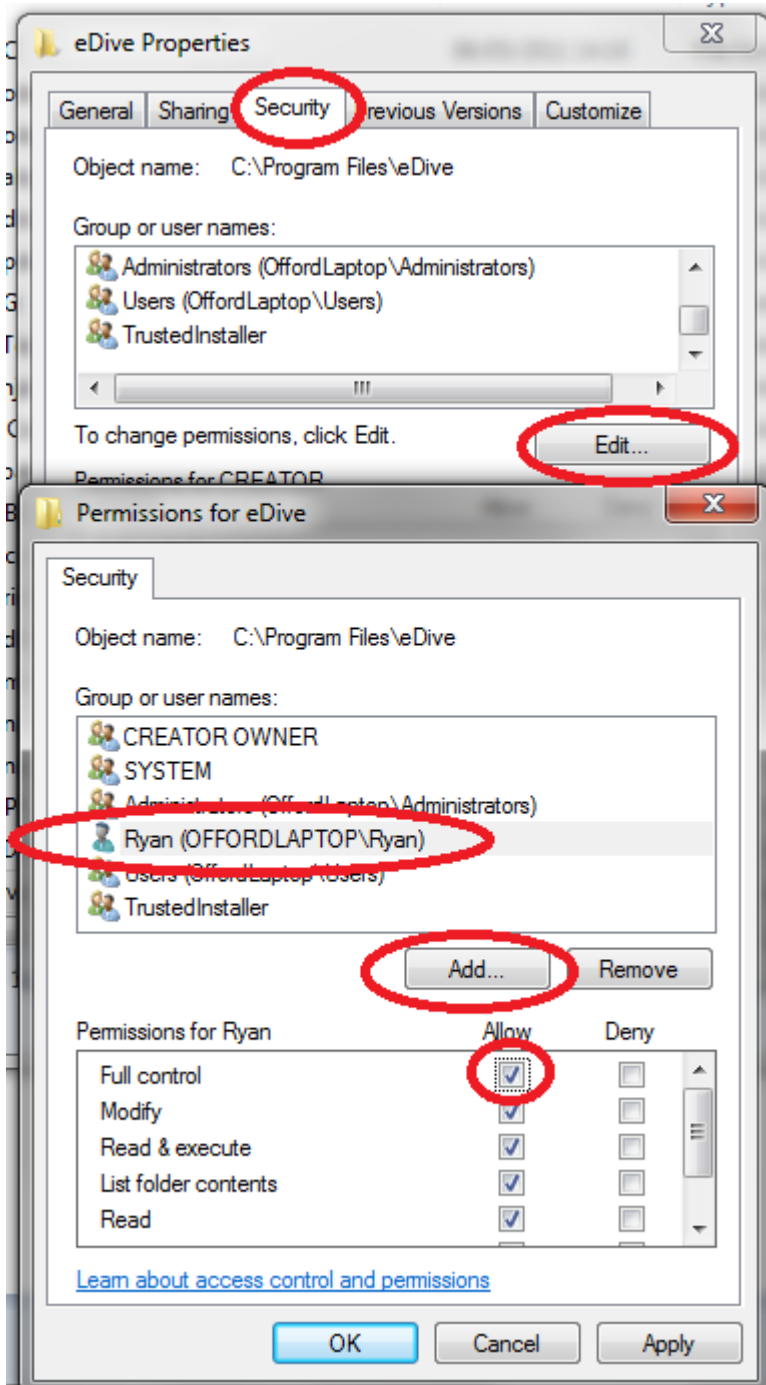
You should now see a screen that looks like the one below. Click on 'Advanced'.



Next click on 'Find Now' and you should see all of the possible users listed. Hopefully you can find your current username in there. Don't worry if you can't, you can choose 'everyone' as all we need to do is grant permissions for eDive and we aren't affecting anything else.



Click OK once done. You should now be back at the following screen :



Select the user in the top half of the screen and ensure you tick 'Full Control' as shown above. Click on OK on each screen until you are back to your desktop.

All this does is grant the user you select the rights to use everything within the eDive folder. This does NOT give any extra permissions out to anything else. It's purely for the folder and any sub folders.